

# NEW HOPE PRESS

FEBRUARY 2017

## *Souper Bowl Sunday*

The Souper Bowl of Caring is a national movement of congregations, schools, community organizations and compassionate individuals caring for others on Super Bowl weekend. 100% of the collections are donated directly to the charity of each group's choice.



The Youth Groups of New Hope Presbyterian Church will be collecting can goods and money to support this cause following both worship services on Sunday, February 5, 2017. All collections will go to the OASIS Food Pantry.

With your help, more dollars will be raised, more lives will be changed, and more young people will experience the joy of serving Christ by serving others. Bring your can goods to service on February 5th and help "tackle" hunger during the 2017 Souper Bowl of Caring!

## *Cinnamon Roll Fundraiser*

The Senior High Mission Trip participants are selling Homemade Cinnamon Rolls as a fundraiser. These rolls are similar to "Cinnabons" and are sold in 8X8 pans for \$10.00. Orders are due by Sunday, February 19th. The Cinnamon rolls will be available for pick-up during both services on February 26th. Order forms are available in the Outreach and information area of the Narthex and below. Please call the church office if you have any questions.



## *Chili Cook-Off*



Please join PW and MME as they host the annual New Hope Chili Cook-off on Sunday, February 26 following the 11:00 a.m. worship service. Think you have the best chili recipe? Prove it by bringing your favorite and be ready to sample other great chilis. Not a chef? Don't worry, there will be lots to share! Then, after you've eaten your fill, you get to vote for your favorite using dollars. Prizes are awarded for first and second place and all dollars collected will be donated to support New Hope's summer mission trip. This

is guaranteed to be a fun fellowship opportunity for a noble cause. Don't miss it!

## A WORD FROM OUR PASTOR...



Raising kids is tough enough. Raising kids in faith can be tougher still. When we present our children for baptism, we receive the promises of God as we ourselves promise to raise them in the faith of the Church. That's a big promise and it is one loaded

with both immeasurable joy and significant challenge. The Church promises to walk with parents in all this and, to that end, our Journey Leadership Team has invited parents of children, birth through high school, to join together to explore what all this means.

*A Parent's Journey* began meeting on Sunday, January 22, during our normal Sunday hour of education and formation. The group has started out with parents beginning to reflect on their own faith stories, how they've come to faith, as well as how they are called to live it out through this congregation. Over the course of the next few months of meeting together, there will be plenty of time for questions about anything and everything having to do with faith, the church, and raising children to be healthy, faithful adults. The group will encounter God through prayerful reading of scripture together and grow through fellowship with others, all of whom want their children to grow into the people God has created them to be.

The Journey Leadership Team intends for this to be something of "a parents' support group for baptismal living." Some of the participants will be parents, who themselves are preparing to present their own children for baptism at Easter. Others have already done so and want to meet with other parents to glean support and resources for raising their children in faith and faithfulness. Following the model of the ancient catechumenate, this is an opportunity for all to engage in a time of spiritual renewal and to affirm their own baptisms. Following the baptisms and affirmation of baptisms at Easter, *A Parent's Journey* will continue on to Pentecost Sunday, June 4<sup>th</sup>, as the group explores ways to live out the promises of baptism with and for their children during their different developmental stages.

If you have a child, newborn through high school -age, and have not received the letter or email inviting you to be a part of this, the group would welcome you with open arms. If you are interested or have questions, you may contact me or Ruth Irvine at [ruthirvine@sbcglobal.net](mailto:ruthirvine@sbcglobal.net).

Peace,

A handwritten signature in cursive script that reads "Chris".

## *Going Flowerless for Lent: Reflections on the Season*



LENT

The Worship, Music & the Arts Committee has been exploring ways to help our worship lift up the meanings of Lent as a season of the liturgical year. The season of Lent is 40 days, a significant number in the Bible and in our liturgy. It rained for 40 days and nights while Noah was on the ark and God was wiping all wickedness from the face of the earth; the children of Israel wandered for 40 years in the wilderness on their way from slavery in Egypt to freedom in the land of Canaan; the Israelites were under the oppression of the Philistines for 40 years before Samson was born; Elijah prepared for ministry for 40 days and nights; Jonah warned the people of Nineveh that they had 40 days in which to repent; Jesus fasted and was tempted for 40 days before he began his public ministry; there are 40 days from Jesus' Resurrection to his Ascension.

Not only does the number 40 have biblical and liturgical significance, but it has biological significance, as well. In weeks, 40 is the length of human fetal development from conception to birth. So, this number is a part of the development of human life.

At Easter, we celebrate the ultimate triumph of life. During Lent, we prepare for that and strive to empty ourselves of everything that gets in the way of living truly as God would have us live. The undeniable Christian confession is that there is no resurrection without death. Lent is the time to come face to face with the fact of our mortality. Penitence and repentance are "churchy" words often associated with Lent. Like Jesus in the wilderness, Lent is a time for us to travel the dry, dusty road to Jerusalem and experience the barrenness of our own particular wilderness that we might, too, know the joy of resurrection life at Easter.

To that end, we will do without our customary flowers in worship during the season of Lent that we might be all the more enlivened by their return on Easter morning. Rather, our Worship, Music & the Arts Committee has other adornments planned to help us observe Lent as a season of walking with Jesus through the wilderness to Jerusalem, the cross and beyond.

## *Ash Wednesday*

Ash Wednesday, March 1st, marks the beginning of Lent, the 40 days of prayer, fasting, and preparation before Easter.

In worship, at 7:00 pm, we will observe the imposition of ashes and share the Lord's Supper. Ashes, placed on the forehead in the sign of the cross, are a powerful symbol of both our own mortality and the need for repentance and forgiveness.

Before worship, the Fellowship Committee will serve a simple soup supper at 5:45 pm, with breads, peanut butter and jelly sandwiches and drinks. Cost: \$2.00 per person or \$5.00 per family. Sign-up inserts are available on the information table. Please RSVP by completing a form and placing it the offering plate along with your cash or check made out to NHPC and marked Soup Supper.



## *Blood Drive*

The Deacons are sponsoring a blood drive at New Hope on Monday, February 27th from 3:00—7:00 pm. Please consider donating blood! You can sign up now in the Narthex before or after the worship service.



## *Female Connection*

### **New Hope Ladies with an Artistic Twist**



Female Connection is going to have a painting party at 7 pm on Thursday, February 16. We have arranged a private party to be led through creating a simple portrait that will be yours to enjoy. If you have never done this before, this is your opportunity to try something new while enjoying a fun evening with friends. There is a cost of \$35, which covers all materials and instruction, and is required in advance. We have a sign-up sheet or you can contact Sharon Martin or Deb Mackin.

## *Spring Directories*

2017 Church Directories are available. If you had your pictures taken by Lifetouch, you will receive both a picture directory and a New Hope printed directory. Directories are available in the Outreach and Information area of the Narthex and are sorted alphabetically by last name.



## *OASIS 2017 Church Youth Food Challenge*

This four week food drive includes youth groups from several area churches. From February 12 through March 5, four specific food items will be collected each week. The youth will sort, count and deliver the items to Oasis Food Pantry. A tally will be kept as the items are donated by those participating in this friendly challenge. You can find the weekly shopping list in the Information and Outreach area and also in the bulletin. Thank you for your continued support of New Hope's youth and Oasis Food Pantry.

February 12 shopping list: peanut butter,  
jelly/jam, macaroni & cheese, toothpaste.  
Thank you!

## *Earth Care Team*

The Earth Care Team is meeting on Tuesday, February 2nd at 7:00 pm in Room 104!  
We invite anyone who is interested to join us as we begin working on our goals for 2017!



## *Music Notes*

I had waited patiently. There it was. The box containing the choir music I had ordered was sitting on my desk in the office. I was so excited. It felt like Christmas. If you looked in the box you would find a lot of different types of music — something by Mozart; some familiar hymn texts such as Savior, Like a Shepherd Lead Us set to new and different tunes; a gospel piece; spirituals; and a setting of a “contemporary Christian song” to name a few. So I hope you will be in worship often as the choir presents these pieces in worship, and I hope that something in the pieces will touch you, make you think, deepen your faith.

The handbell choir has gained some new members. This is exciting, and we are looking forward to hearing this group play several times in the coming months. Some instrumentalists and some small vocal ensembles will also share their talents with us soon.

The congregation will sing some new service music (Alleluia, Sanctus, etc.), and I am currently working on composing a setting of these types of pieces just for New Hope!

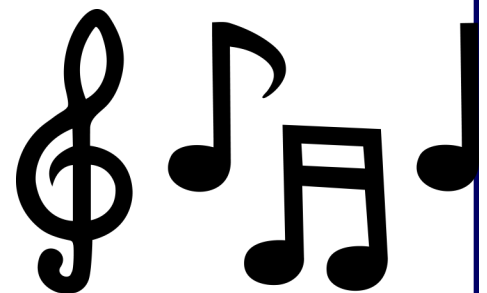
Lent begins on March 1. We are already making plans for the Lenten season and for Easter.

### MUSIC PLANNED FOR FEBRUARY-MARCH 1

February 5 Lamb of God (choir)  
February 12 Give Me Jesus (choir); and handbells selection  
February 19 Lord, Make Me an Instrument of Thy Peace (choir)  
February 26 High Upon a Mountain (choir)  
March 1 Create in Me a Clean Heart, O God (choir)

Look for new photos of our choir and bells on the church website soon.

Peace,  
Gay



## *Youth Corner*

Sunday, February 12 - Hidden Valley "Polar Plunge" (tubing)!! We will leave church at 3 pm. We will tube for 3 hours (one session) and then head to Joe Boccardi's for pizza. We should be back to church by 9:15. Cost to each youth is \$15 for tubing and dinner. We do need adult drivers for this event.

### *February Birthdays*

Amelia Ward	02/01
A.J. Ward	02/03
Ann Rademan	02/04
Tyler Etling	02/06
Nicole Brown	02/07
Lindy Stacy	02/08
Craig Clarke	02/10
Lauren Martinez	02/10
Kim Carr	02/14
Gregory Newman	02/17
Liam Schrautemeier	02/17
Ann Ray	02/18
Ernest Smith	02/18
Craig Graber	02/19
Bill Lamey	02/19
Cindy Wilson	02/20
Brian Saeger	02/21
Christopher James	02/23
Paul Hacker	02/24
Jerry Dyer	02/26
Mel Fairchild	02/27
Gary Looman	02/27

### *February Anniversaries*

Kurt & Jeanna Groat	02/10/2002
Bill & Martha Lamey	02/11/1996
Jim & Anne Finks	02/13/1965
David & Vicky Howell	02/15/2001
Gary & Kathy Freeman	02/23/1983



## FEBRUARY 2017

Sun	Mon	Tue	Wed	Thu	Fri	Sat
			<b>1</b> 5:00pm Journey Leadership Team 6:30pm Handbells 7:15pm Choir	<b>2</b> 1:00pm Agape Circle 7:00pm Joy Circle 7:00pm Earth Care Team	<b>3</b>	<b>4</b>
<b>5 Souper Bowl of Caring</b> 8:45am Worship 9:45am Christian Ed 11:00am Worship 12:00pm Harmony Faith Family	<b>6</b> 7:00pm Deacon Meeting	<b>7</b>	<b>8</b> 5:00pm Journey Leadership Team 6:30pm Handbells 7:15pm Choir	<b>9</b> 7:00pm Boy Scouts	<b>10</b>	<b>11</b> 9:45am OASIS Food Pantry
<b>12</b> 8:45am Worship 9:45am Christian Ed 11:00am Worship 3:00pm Youth Polar Plunge	<b>13</b> 7:00pm Session Meeting	<b>14</b>	<b>15</b> 5:00pm Journey Leadership Team 6:30pm Handbells 7:15pm Choir	<b>16</b> 5:50pm Employment Ministry Committee 6:00pm Boy Scouts 7:00pm Female Connection 7:00pm Employment Ministry	<b>17</b>	<b>18</b> 8:00am Men's Fellowship Breakfast
<b>19</b> 8:45am Worship 9:45am Christian Ed 11:00am Worship	<b>20 Presidents' Day</b> 6:00pm Jubilee Circle	<b>21</b> 9:30am PW Coordinating Team	<b>22</b> 5:00pm Journey Leadership Team 6:30pm Handbells 7:15pm Choir	<b>23</b> 4:00pm Cub Scout Blue & Gold Banquet	<b>24</b>	<b>25</b> 3:00pm Youth Cinnamon Rolls/Lock-In
<b>26 Cinnamon Roll Pickup</b> 8:45am Worship 9:45am Christian Ed 11:00am Worship 12:30pm Chili Cook-Off	<b>27</b> 3:00pm Deacon Blood Drive 7:00pm Formation for Discipleship Committee	<b>29</b>	<b>March 1</b> <i>Ash Wednesday</i> 5:45pm Soup Supper 7:00pm Worship Service			

### *FINANCIAL CORNER*

<b>CONTRIBUTIONS</b>	<b>January 2017</b>	<b>Year To Date 2017</b>
<b>Budget</b>	<b>35,145.00</b>	<b>35,145.00</b>
<b>To-date Actual</b>	<b>41,571.00</b>	<b>41,571.00</b>

New Hope Presbyterian Church  
 1580 Kisker Road  
 St. Charles MO 63304

Phone: 636/936-2200  
 E-mail: [lbrown@nhpres.org](mailto:lbrown@nhpres.org)  
 Website: [www.nhpres.org](http://www.nhpres.org)